



**The O'Leary Report &  
World Net Daily**

**Present**

**The Obama 100 Days Poll**

**Conducted by**

**Zogby International**

**May 2009**

# Methodology

**Conducted:** April 24-27, 2009

**Sample:** 3,937 people who voted in 2008

**Sample Weighting:** 53% Obama Voters  
46% McCain Voters

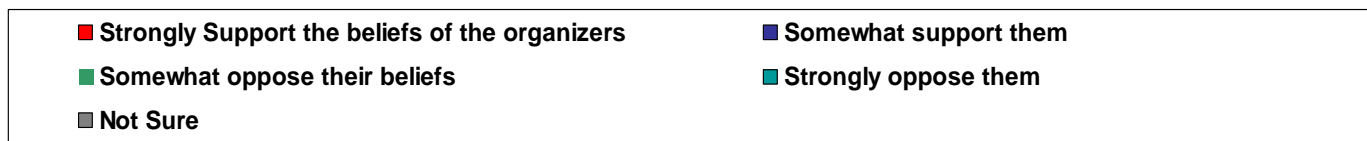
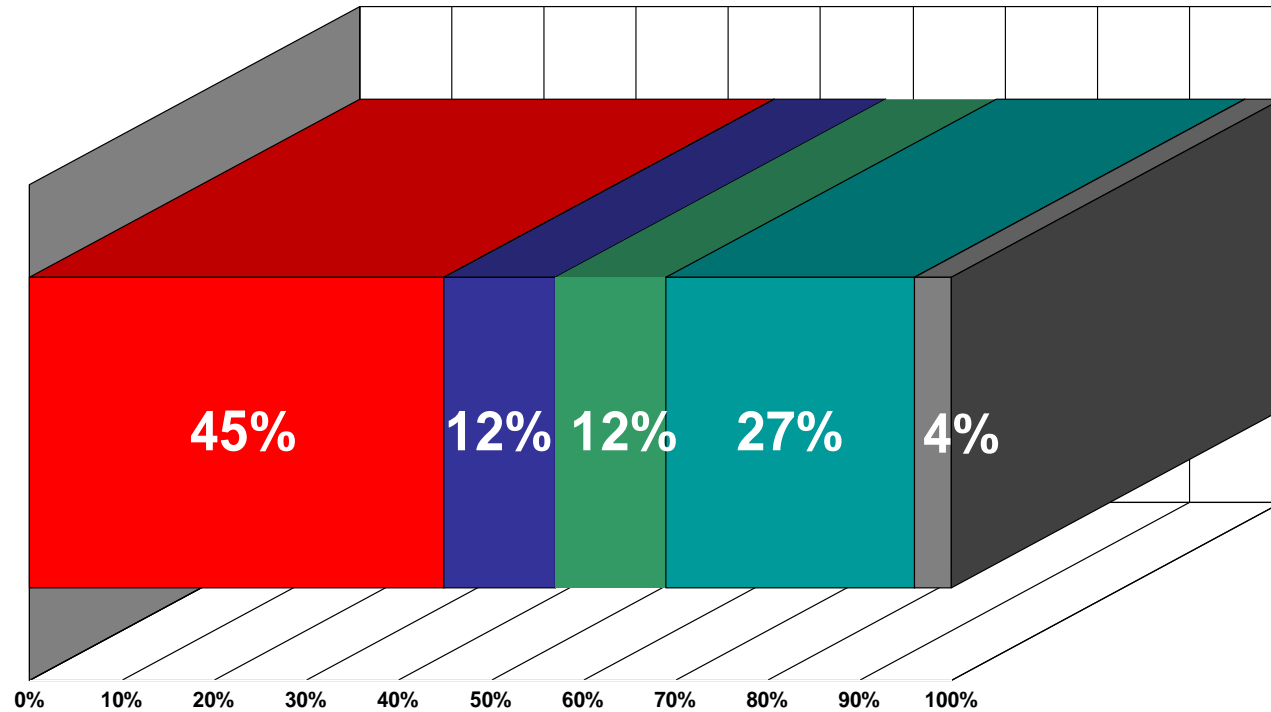
# **Voter Participation & Voter Failure to Participate in the 2008 General Election**

	<b>Targets of Opportunity: <u>Not Voting in '08</u></b>	<b>Estimate of Number Who <u>Voted in 2008</u></b>
<b>Taxpayers</b>	<b>31 million</b>	<b>65 million</b>
<b>Gun Owners</b>	<b>30 million</b>	<b>50 million</b>
<b>Attend church weekly or more</b>	<b>28 million</b>	<b>45 million</b>
<b>Republicans</b>	<b>26 million</b>	<b>42 million</b>
<b>Independents</b>	<b>23 million</b>	<b>38 million</b>
<b>Military personnel &amp; family members</b>	<b>22 million</b>	<b>18 million</b>
<b>Business Owners</b>	<b>11 million</b>	<b>17 million</b>

**Q. Thinking about the Tea Party demonstrations that took place on April 15th to protest the growth in taxes and federal government spending, do you...?**



2008 General  
Election Voters



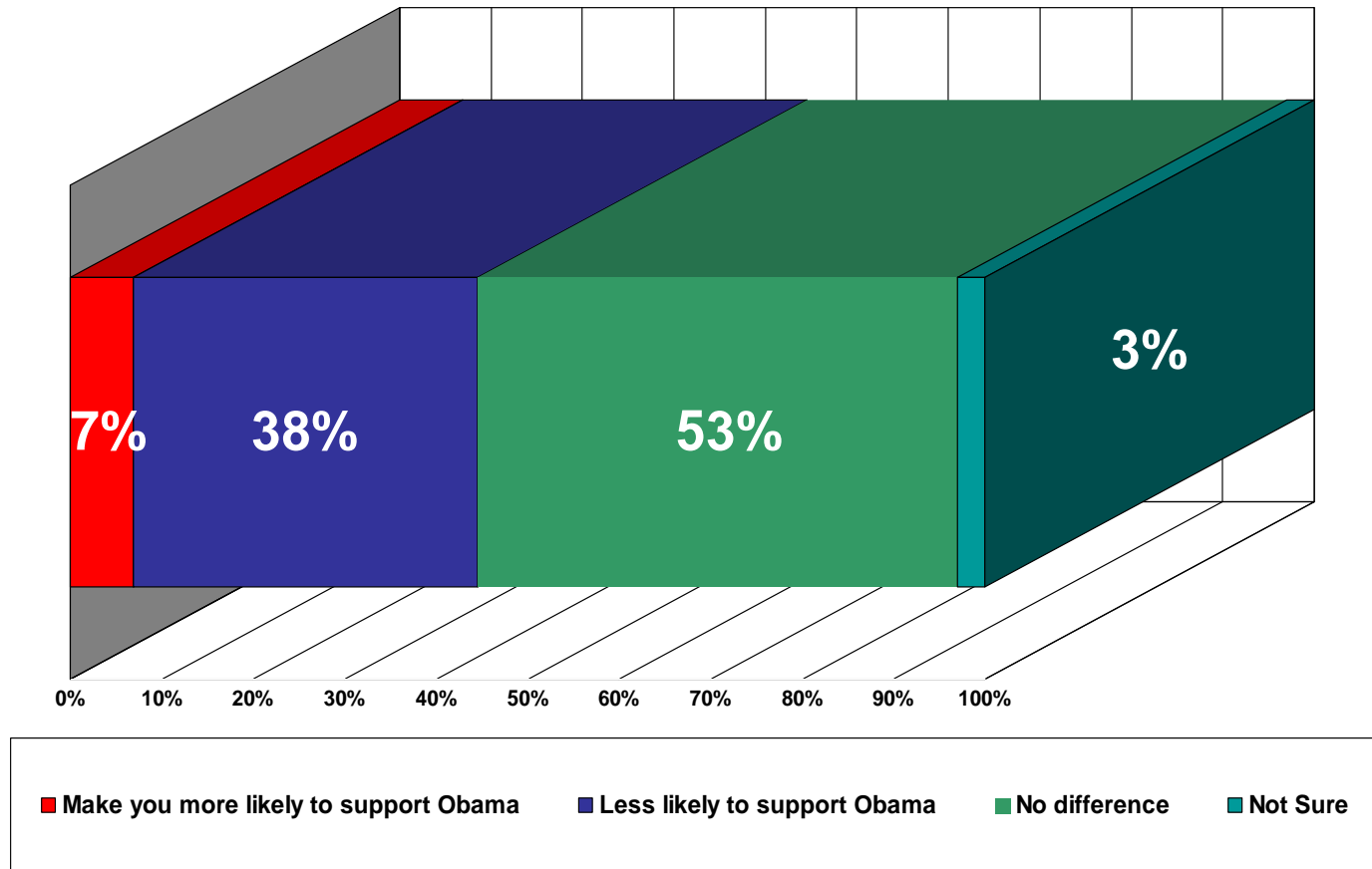
## Tea Party support strongest among the following groups:

- |                 |     |               |     |
|-----------------|-----|---------------|-----|
| • Conservatives | 95% | • Gun Owners  | 69% |
| • Republicans   | 89% | • Catholics   | 64% |
| • NRA Members   | 84% | • Protestants | 63% |
| • Born Agains   | 75% |               |     |

## Targets of opportunity:

- |                 |     |                     |     |
|-----------------|-----|---------------------|-----|
| • Hispanics     | 68% | • African Americans | 25% |
| • Independents  | 66% | • Democrats         | 24% |
| • Age 18-29     | 60% | • Obama Voters      | 22% |
| • Paid No Taxes | 53% |                     |     |

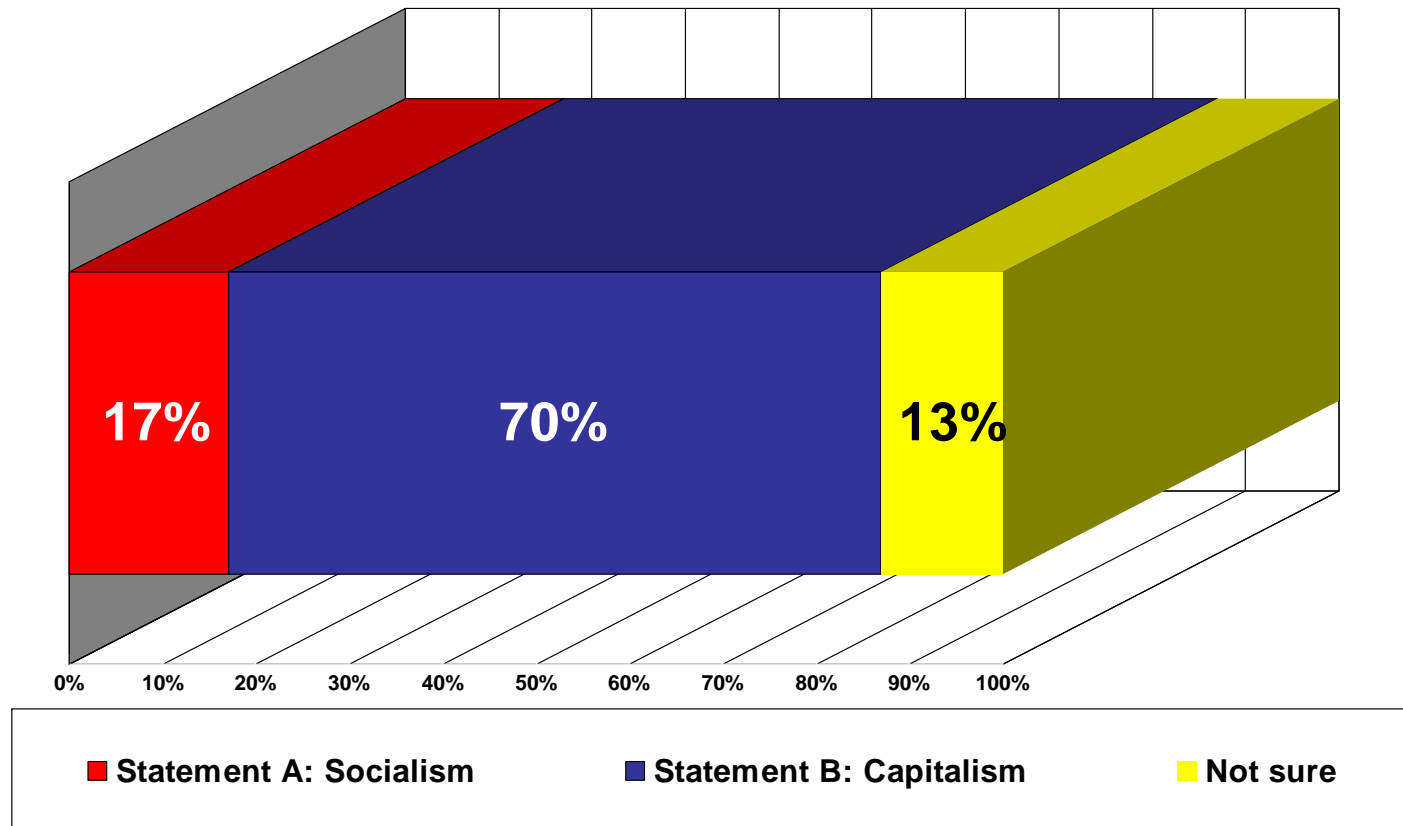
**Q. If the President has to drop his promise not to raise taxes on people earning less than \$250,000 would it...? a) More likely to support Obama; b) Less likely to support Obama; c) No difference; d) Not sure**



**Q. Which of the following do you think is a better economic system – A or B?**

**A: A system in which the public or the state have ownership and administration of the means of production and distribution of goods**

**B: A system in which wealth, and the means of producing wealth are privately owned and controlled rather than state owned or controlled with the state regulating them.**



# Groups giving strongest support for definition of Capitalism:

- |                 |     |                        |     |
|-----------------|-----|------------------------|-----|
| • Conservatives | 93% | • Catholics            | 74% |
| • Republicans   | 89% | • Protestants          | 74% |
| • Born agains   | 83% | • Armed forces members | 72% |
| • NRA members   | 77% | • Asians               | 72% |
| • Gun owners    | 77% | • NASCAR fan           | 71% |
| • Paid taxes    | 76% |                        |     |

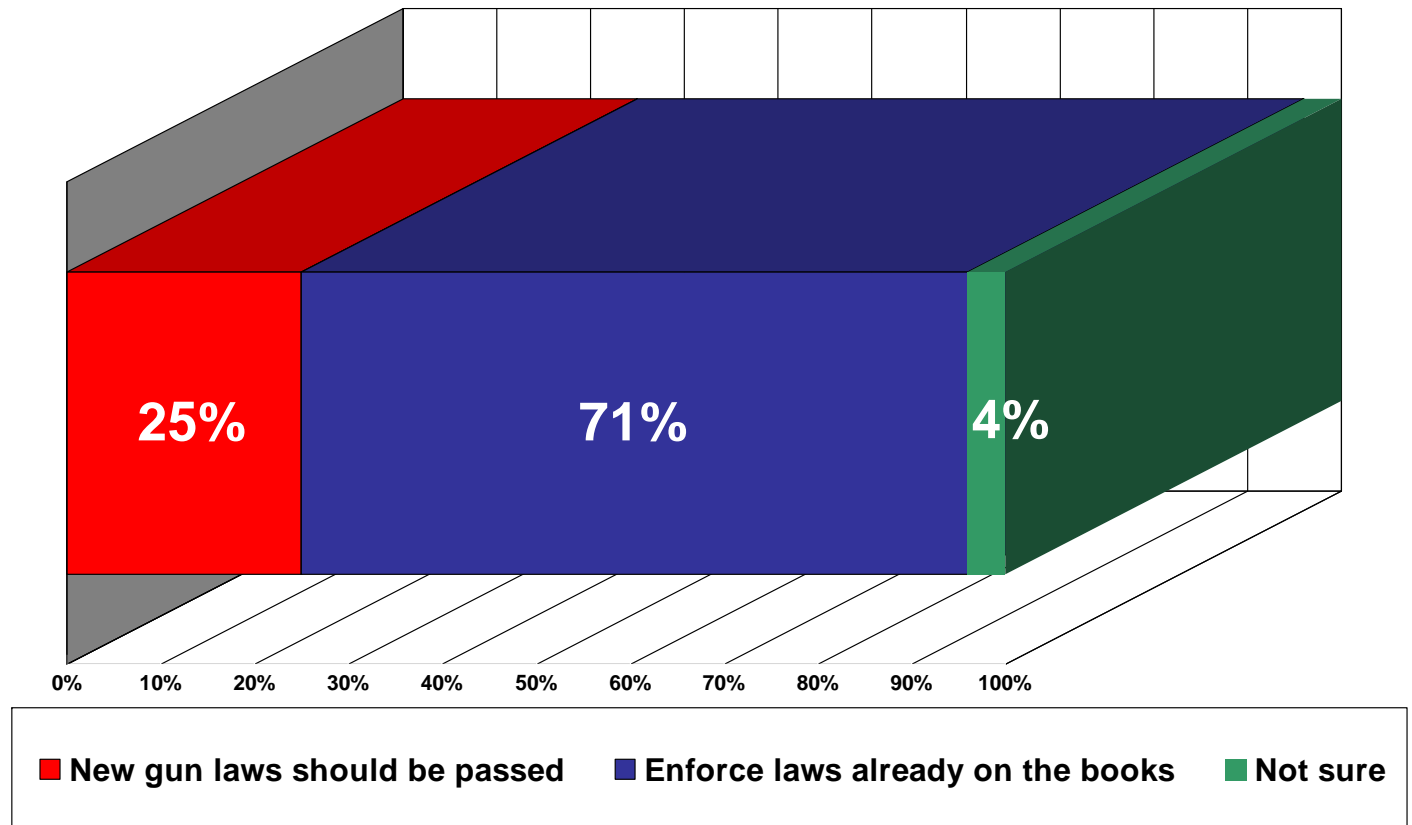
# Targets of opportunity:

- |                 |     |                     |     |
|-----------------|-----|---------------------|-----|
| • Independents  | 76% | • African Americans | 52% |
| • Age 18-29     | 64% | • Democrats         | 49% |
| • Hispanics     | 63% | • Obama Voters      | 49% |
| • Paid No Taxes | 55% |                     |     |

**Q. Do you think new gun laws should be passed or do you think we should enforce the laws already on the books?**



**2008 General  
Election Voters**



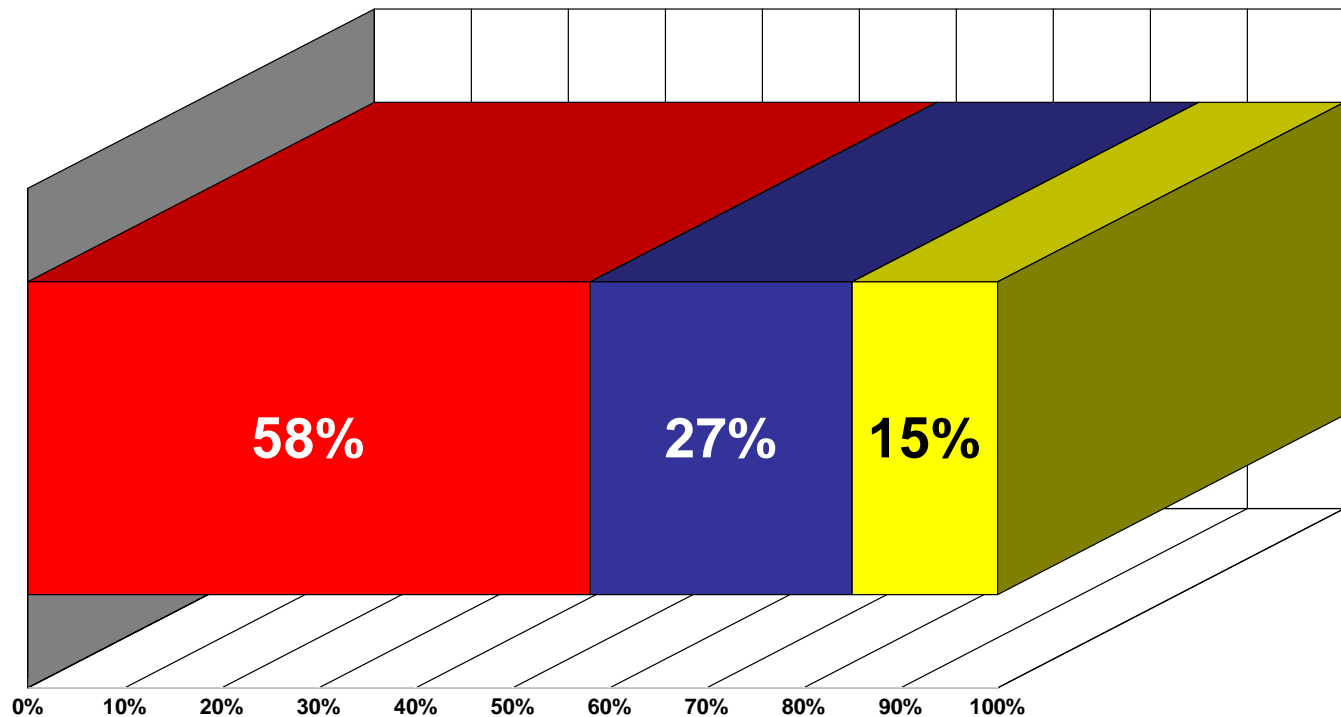
## Groups that support enforcing current gun laws on the books:

- |                 |     |                        |     |
|-----------------|-----|------------------------|-----|
| • Conservatives | 96% | • Protestants          | 77% |
| • NRA members   | 93% | • Catholics            | 74% |
| • Republicans   | 91% | • Paid taxes           | 73% |
| • Born agains   | 88% | • Armed forces members | 72% |
| • Gun owners    | 86% |                        |     |

## Targets of opportunity:

- |                     |     |                |     |
|---------------------|-----|----------------|-----|
| • Independents      | 78% | • Age 18-29    | 60% |
| • African Americans | 72% | • Obama Voters | 50% |
| • Hispanics         | 66% | • Democrats    | 49% |
| • Paid No Taxes     | 66% |                |     |

**Q. The Department of Homeland Security recently issued a report to 850,000 law enforcement officers that focused on the potential terrorist threat from disgruntled veterans and people dedicated to a single issue, such as abortion and the Second Amendment. Do you think these groups are...?**



■ Statement was inappropriate ■ A good warning/groups are dangerous ■ No opinion

## Groups that found DHS report on right-wing extremists inappropriate:

- |               |     |                        |     |
|---------------|-----|------------------------|-----|
| • NRA members | 86% | • Catholics            | 64% |
| • Republicans | 85% | • Protestants          | 63% |
| • Born agains | 74% | • Armed forces members | 60% |
| • Gun owners  | 73% | • Paid taxes           | 59% |
| • NASCAR fans | 72% |                        |     |

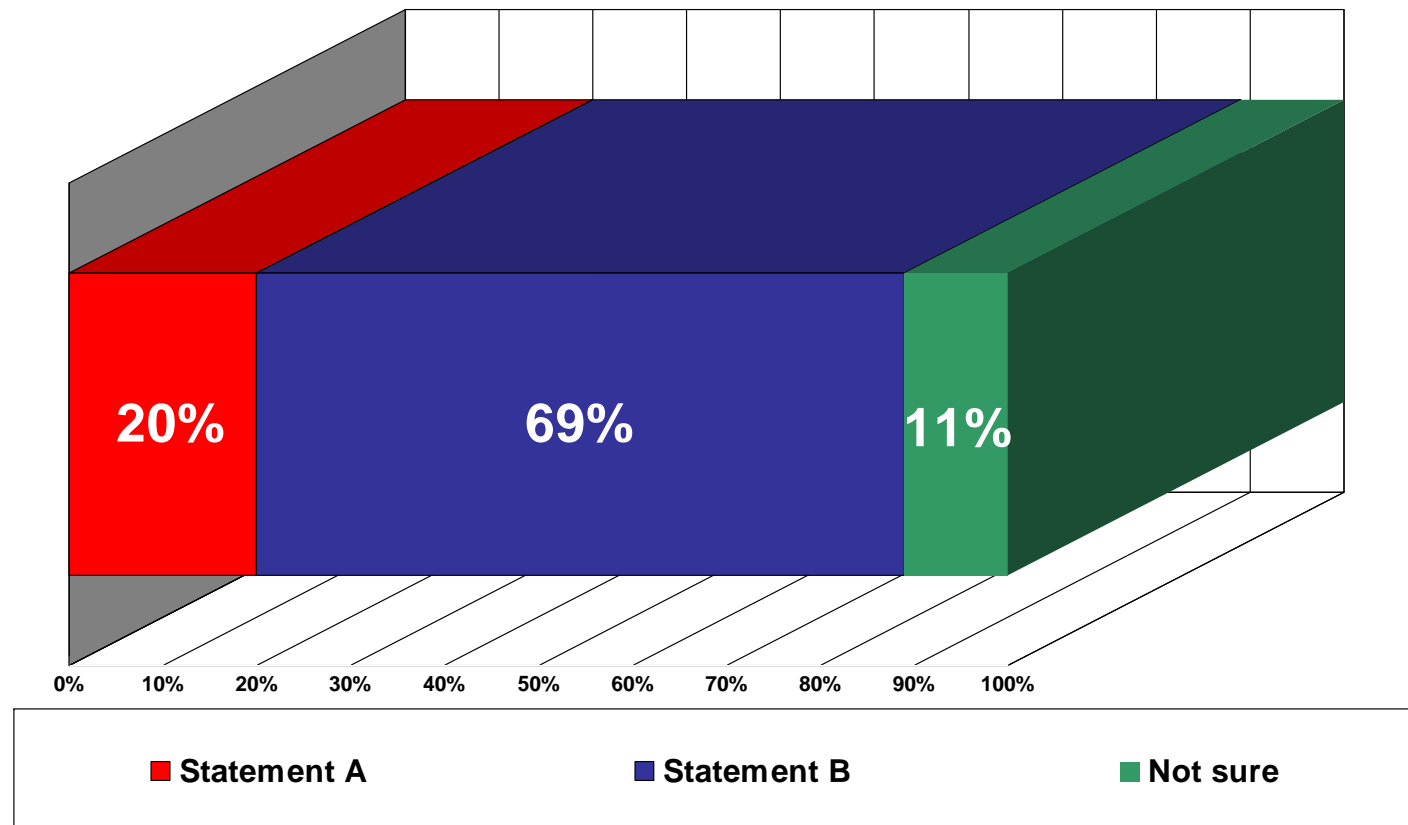
## Targets of opportunity:

- |                 |     |                     |     |
|-----------------|-----|---------------------|-----|
| • Hispanics     | 69% | • Democrats         | 31% |
| • Independents  | 63% | • African Americans | 29% |
| • Age 18-29     | 56% | • Obama Voters      | 28% |
| • Paid No Taxes | 53% |                     |     |

**Q. The President's Chief of Staff, Rahm Emanuel, recently stated that the 1 million people the government put on the "no fly" list should be prohibited from purchasing a gun, even if they are not guilty of a felony or crime and they may not even be the correct person who is targeted by the list. With respect to the "no fly" list which statement do you support?**

**Statement A: People on the no fly list should be prohibited from buying a gun.**

**Statement B: People on the no-fly list should be prohibited from buying a gun only if they are convicted of a crime.**



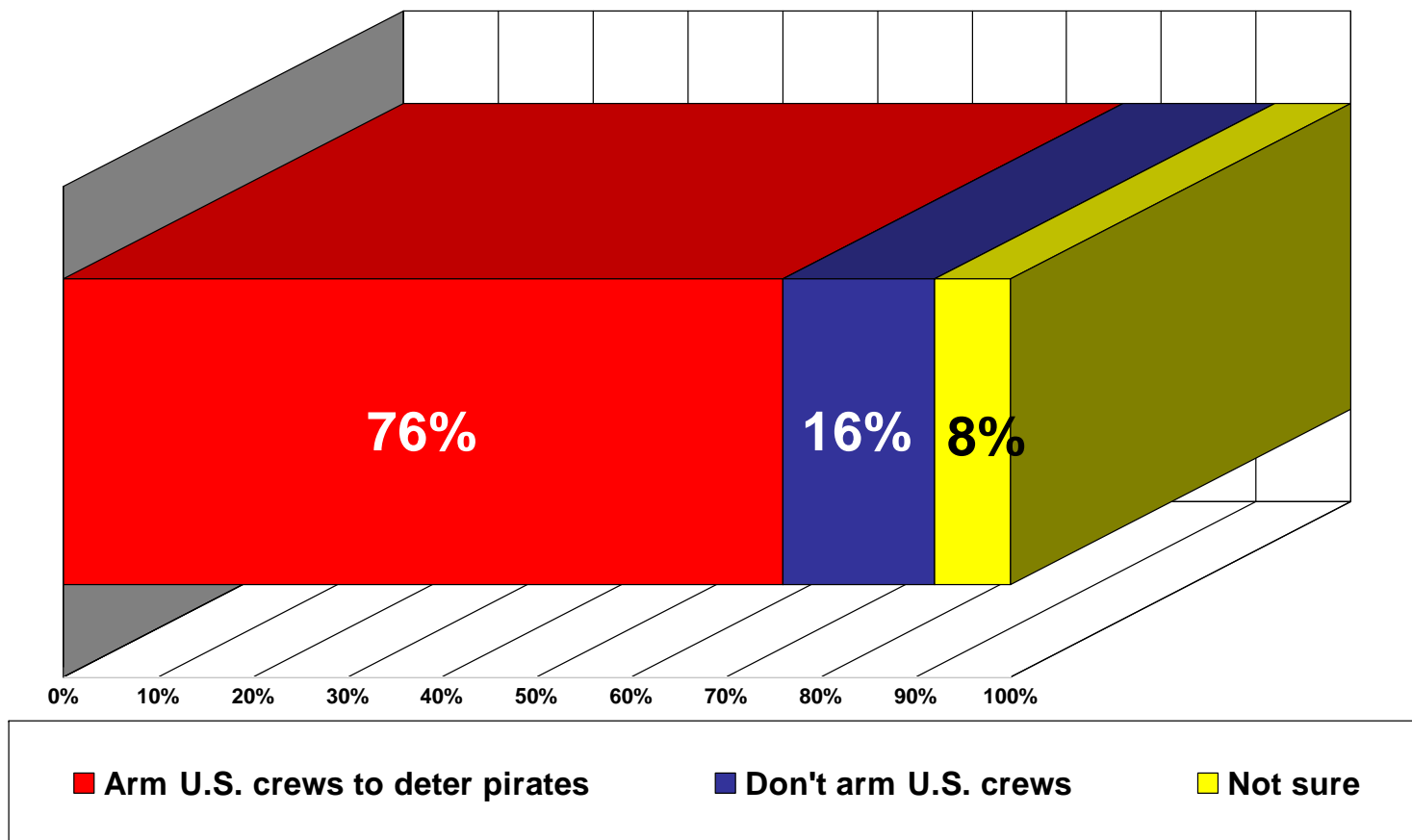
## Groups that believe only people convicted of a crime that are on the “no fly” list should be prohibited from buying a gun:

- |                 |     |                        |     |
|-----------------|-----|------------------------|-----|
| • NRA members   | 84% | • Paid taxes           | 70% |
| • Conservatives | 81% | • Armed forces members | 70% |
| • Gun owners    | 77% | • Catholics            | 70% |
| • Republicans   | 75% | • Protestants          | 70% |
| • Born agains   | 75% | • NASCAR fans          | 69% |

## Targets of opportunity:

- |                     |     |                |     |
|---------------------|-----|----------------|-----|
| • Independents      | 75% | • Hispanics    | 60% |
| • Age 18-29         | 70% | • Obama Voters | 59% |
| • Paid No Taxes     | 66% | • Democrats    | 58% |
| • African Americans | 61% |                |     |

**Q. Some U.S. shipping company owners who ply their trade in the pirate-infested waters off Somalia are considering arming their U.S. crews in an effort to combat pirates and defend themselves. Other U.S. ship owners worry that their company might be held liable for deaths or injuries by someone on the vessel. Which course of action is best to safeguard shipping in pirate-infested waters? A) Arm crews so they can deter pirates; B) Leave U.S. crews unarmed and let the U.S. Navy take care of it; or C) Not sure.**



## Groups that support arming of U.S. crews of U.S. ships to deter pirates:

- |                 |     |                        |     |
|-----------------|-----|------------------------|-----|
| • NRA members   | 93% | • Catholics            | 79% |
| • Conservatives | 90% | • Protestants          | 79% |
| • Republicans   | 86% | • NASCAR fans          | 78% |
| • Born agains   | 85% | • Armed forces members | 77% |
| • Gun owners    | 85% |                        |     |

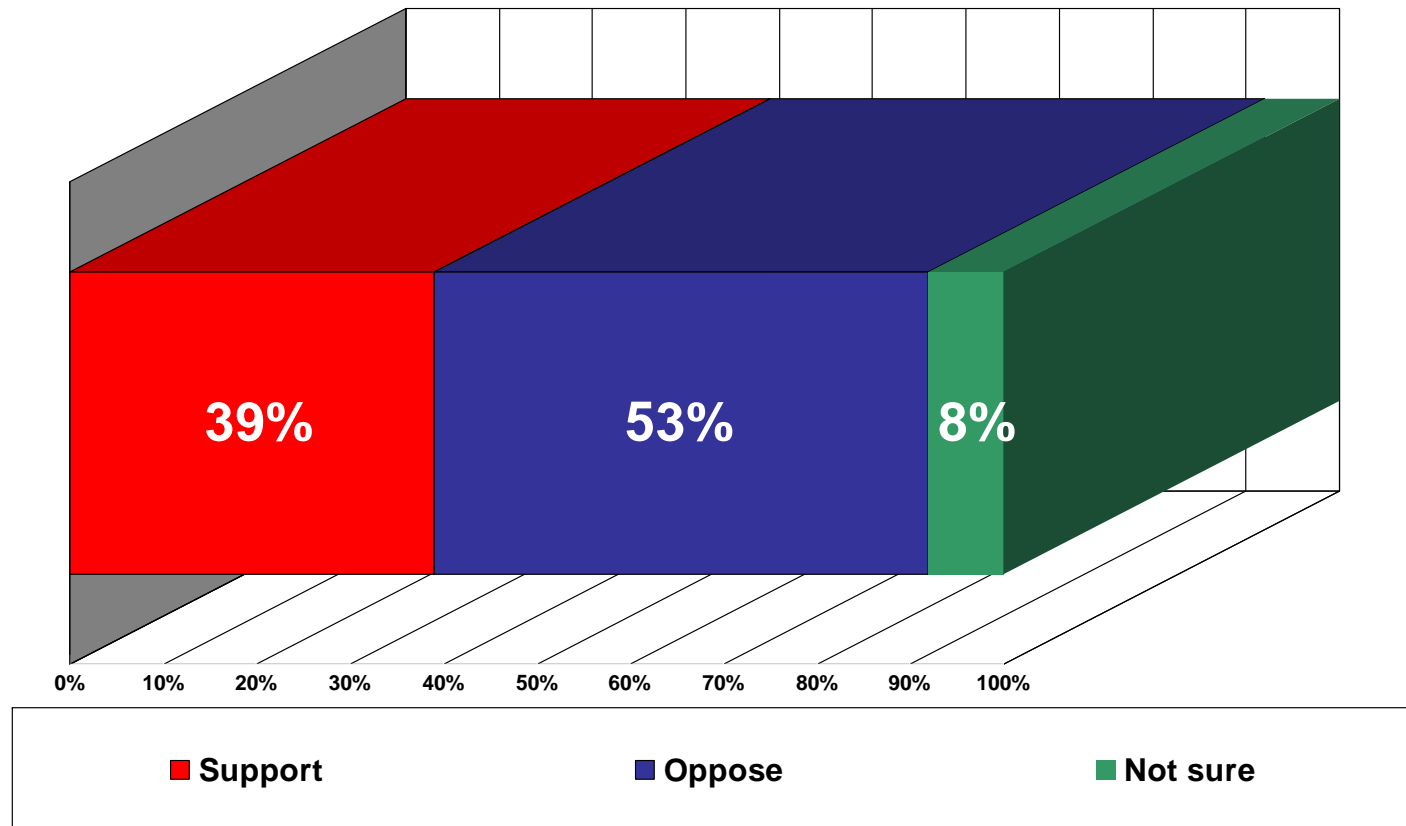
## Targets of opportunity:

- |                     |     |                |     |
|---------------------|-----|----------------|-----|
| • Independents      | 81% | • Age 18-29    | 70% |
| • Paid No Taxes     | 75% | • Obama Voters | 65% |
| • Hispanics         | 74% | • Democrats    | 64% |
| • African Americans | 72% |                |     |

**Q. Senator Durbin recently offered an amendment in the U.S. Senate that requires the Federal Communications Commission to take actions to encourage and promote diversity in communication media ownership. Opponents say the move would threaten the breakup of radio networks that largely carry conservative talk radio shows like Glenn Beck, Rush Limbaugh and Sean Hannity. Do you support or oppose this legislation?**



2008 General  
Election Voters



## Groups opposing Sen. Durbin's diversity legislation for radio station owners:

- |               |     |                        |     |
|---------------|-----|------------------------|-----|
| • Republicans | 88% | • Paid taxes           | 57% |
| • NRA members | 76% | • Asians               | 57% |
| • Born agains | 71% | • Catholics            | 57% |
| • Gun owners  | 64% | • Armed forces members | 56% |
| • Protestants | 60% |                        |     |

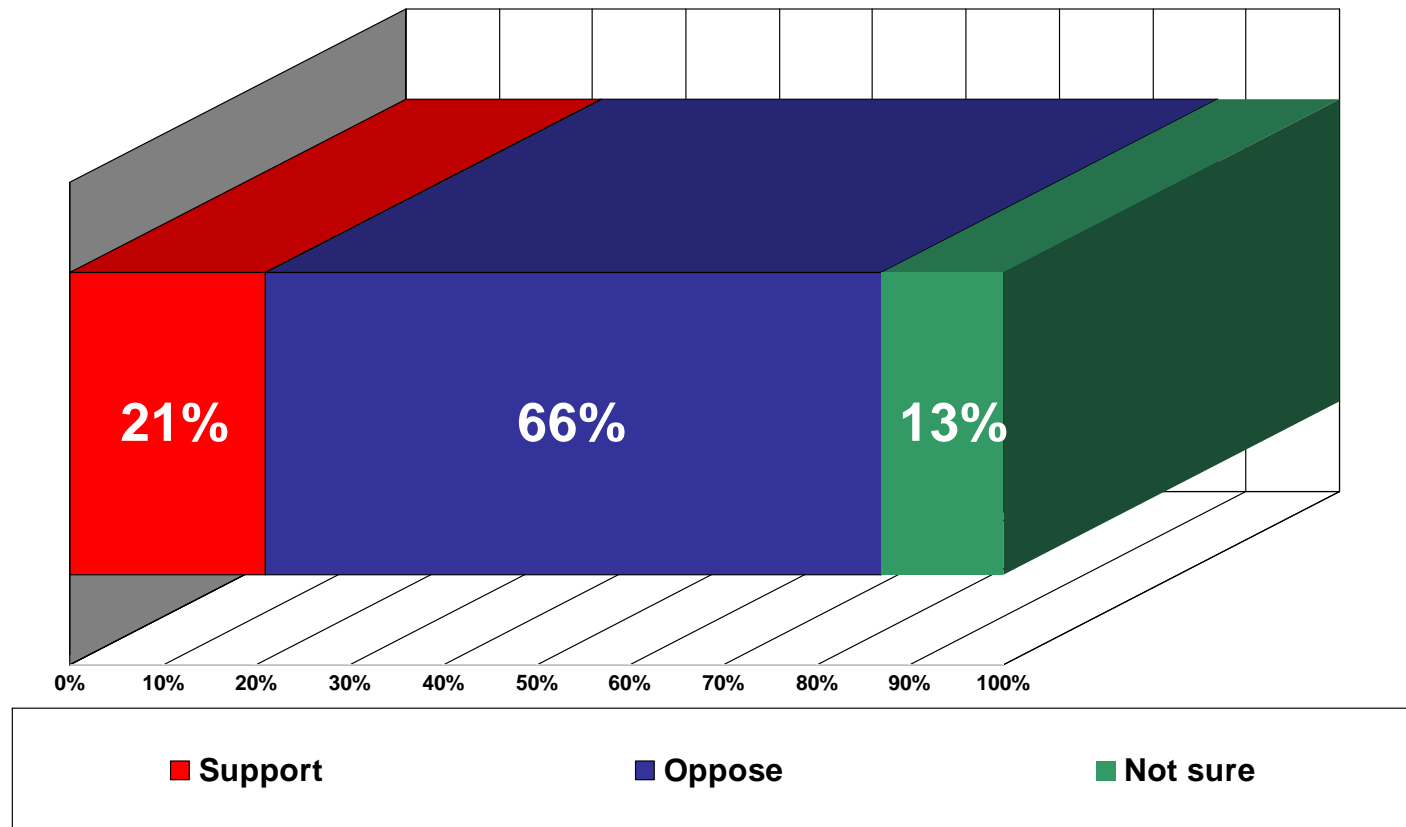
## Targets of opportunity:

- |                 |     |                     |     |
|-----------------|-----|---------------------|-----|
| • Independents  | 60% | • African Americans | 22% |
| • Hispanics     | 50% | • Democrats         | 19% |
| • Age 18-29     | 54% | • Obama Voters      | 18% |
| • Paid no taxes | 43% |                     |     |

**Q. The Federal Communications is entertaining the idea of re-instituting advisory boards to determine the needs and interests of their communities, to promote localism and diversity. These boards, appointed by the FCC and would monitor what is said over the radio and report back if they were offended by the talk show hosts and their guests. Critics argue that such a proposal is nothing more than a back door implementation of the Fairness Doctrine. Do you support or oppose the FCC's efforts to reinstitute advisory boards?**



**2008 General  
Election Voters**



## Groups that oppose FCC efforts to reinstitute advisory boards:

• Conservatives	96%	• Asians	74%
• Republicans	93%	• Protestants	71%
• NRA members	80%	• Catholics	70%
• Born agains	77%	• Paid taxes	69%
• NASCAR fans	76%	• Armed forces members	68%
• Gun owners	75%		

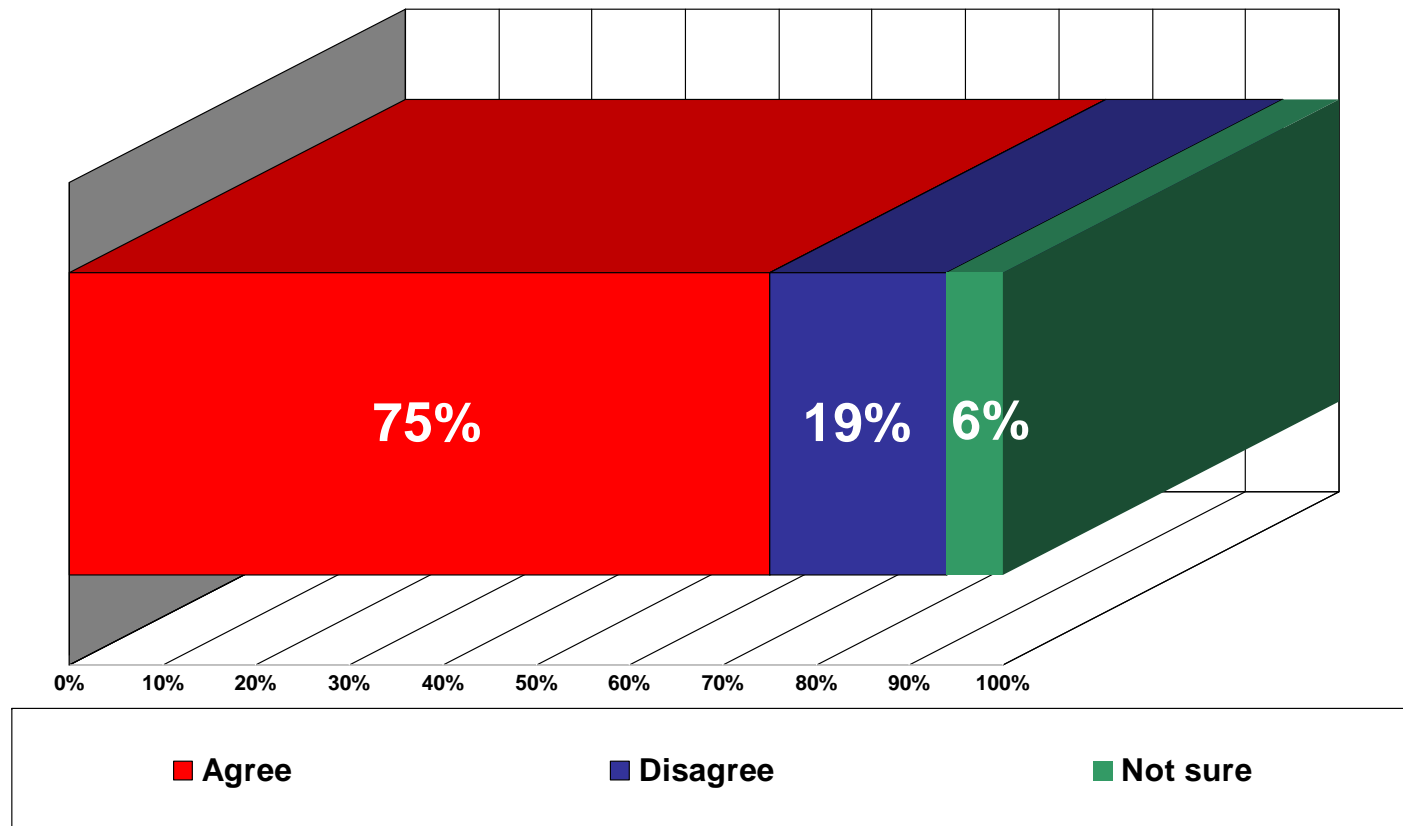
## Targets of opportunity:

• Independents	75%	• African Americans	41%
• Age 18-29	67%	• Obama Voters	41%
• Hispanics	58%	• Democrats	38%
• Paid No Taxes	58%		

**Q. If the Freedom of Choice Act passes, do you agree or disagree that doctors and nurses who believe abortion is murder be exempted from being required to perform abortions?**



2008 General  
Election Voters



## Groups that support exemption under the Freedom of Choice Act for doctors and nurses who believe abortion is murder:

- |                 |     |                        |     |
|-----------------|-----|------------------------|-----|
| • Conservatives | 92% | • Gun owners           | 83% |
| • NRA members   | 92% | • Protestant           | 78% |
| • Born agains   | 91% | • NASCAR fans          | 78% |
| • Republicans   | 90% | • Armed forces members | 76% |
| • Catholics     | 84% |                        |     |

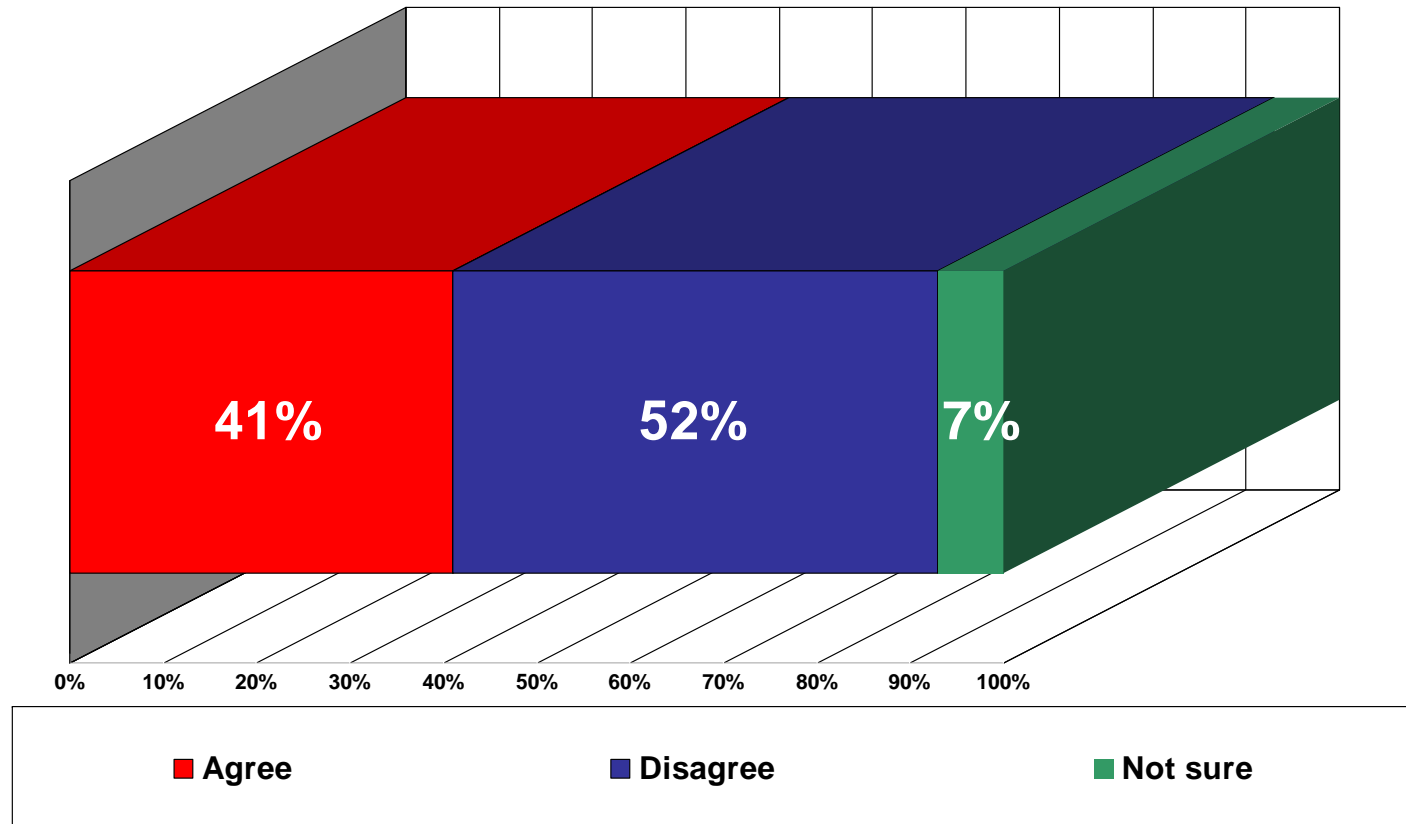
## Targets of opportunity:

- |                 |     |                     |     |
|-----------------|-----|---------------------|-----|
| • Independents  | 78% | • African Americans | 66% |
| • Hispanics     | 75% | • Obama Voters      | 61% |
| • Paid No Taxes | 75% | • Democrats         | 60% |
| • Age 18-29     | 72% |                     |     |

**Q. While visiting Turkey recently, President Obama said “we do not consider ourselves a Christian nation or a Jewish nation or a Muslim nation.” Do agree or disagree that the U.S. is not a Christian nation?**



2008 General Election Voters



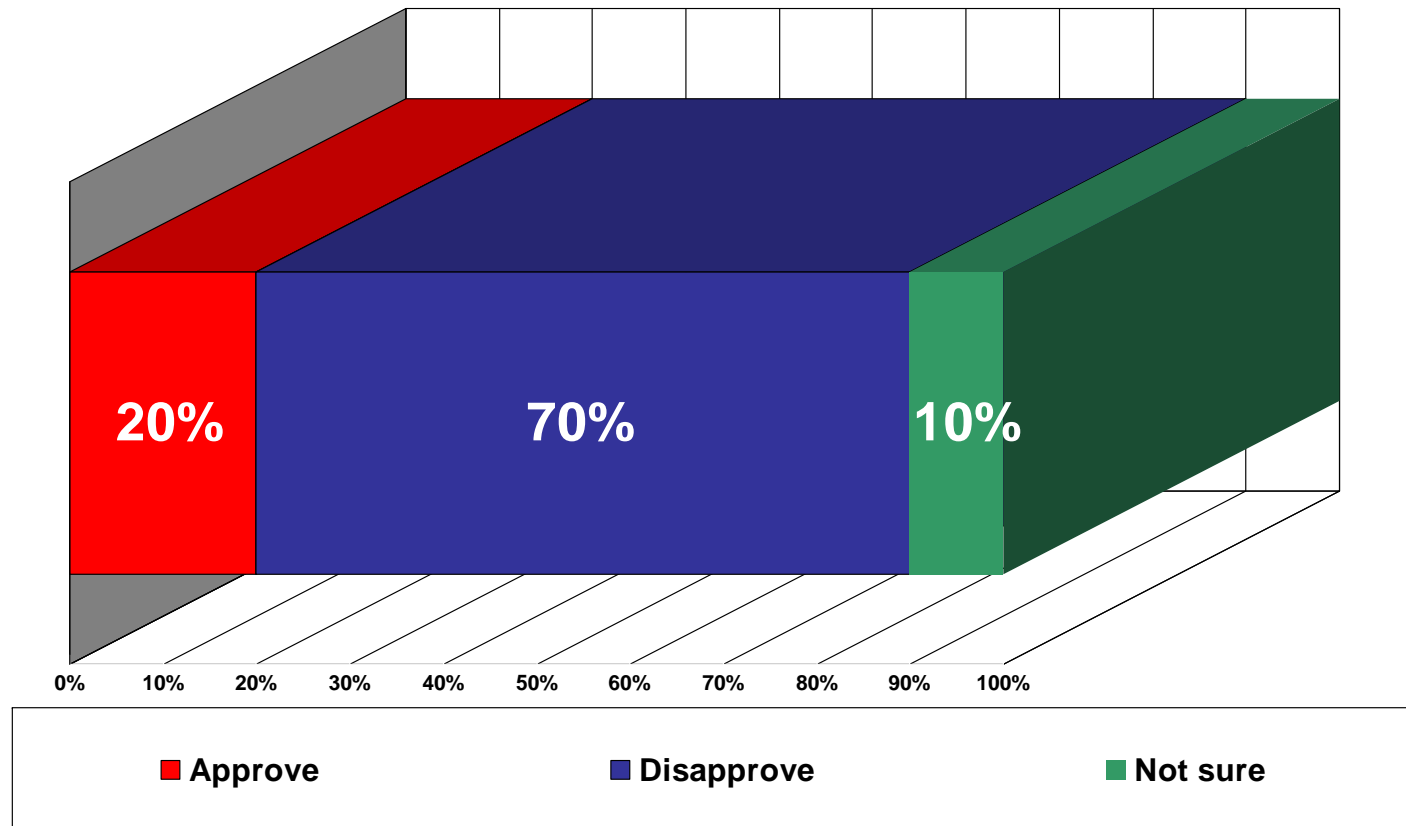
## Groups that disagree with President Obama's statement that the U.S. is not a Christian nation:

- |                 |     |                        |     |
|-----------------|-----|------------------------|-----|
| • Conservatives | 58% | • Armed forces members | 54% |
| • Republicans   | 56% | • Gun owners           | 53% |
| • Born agains   | 55% | • Protestants          | 52% |
| • Paid taxes    | 54% | • Catholics            | 50% |

## Targets of opportunity:

- |                |     |                     |     |
|----------------|-----|---------------------|-----|
| • Age 18-29    | 57% | • Paid No Taxes     | 47% |
| • Independents | 53% | • Obama Voters      | 45% |
| • Democrats    | 49% | • African Americans | 41% |
| • Hispanics    | 47% |                     |     |

**Q. President Obama recently spoke at Georgetown University, a Catholic-chartered university. Prior to his appearance, presidential staff requested that the symbol of Jesus be covered up. Do you approve or disapprove of the White House's actions?**



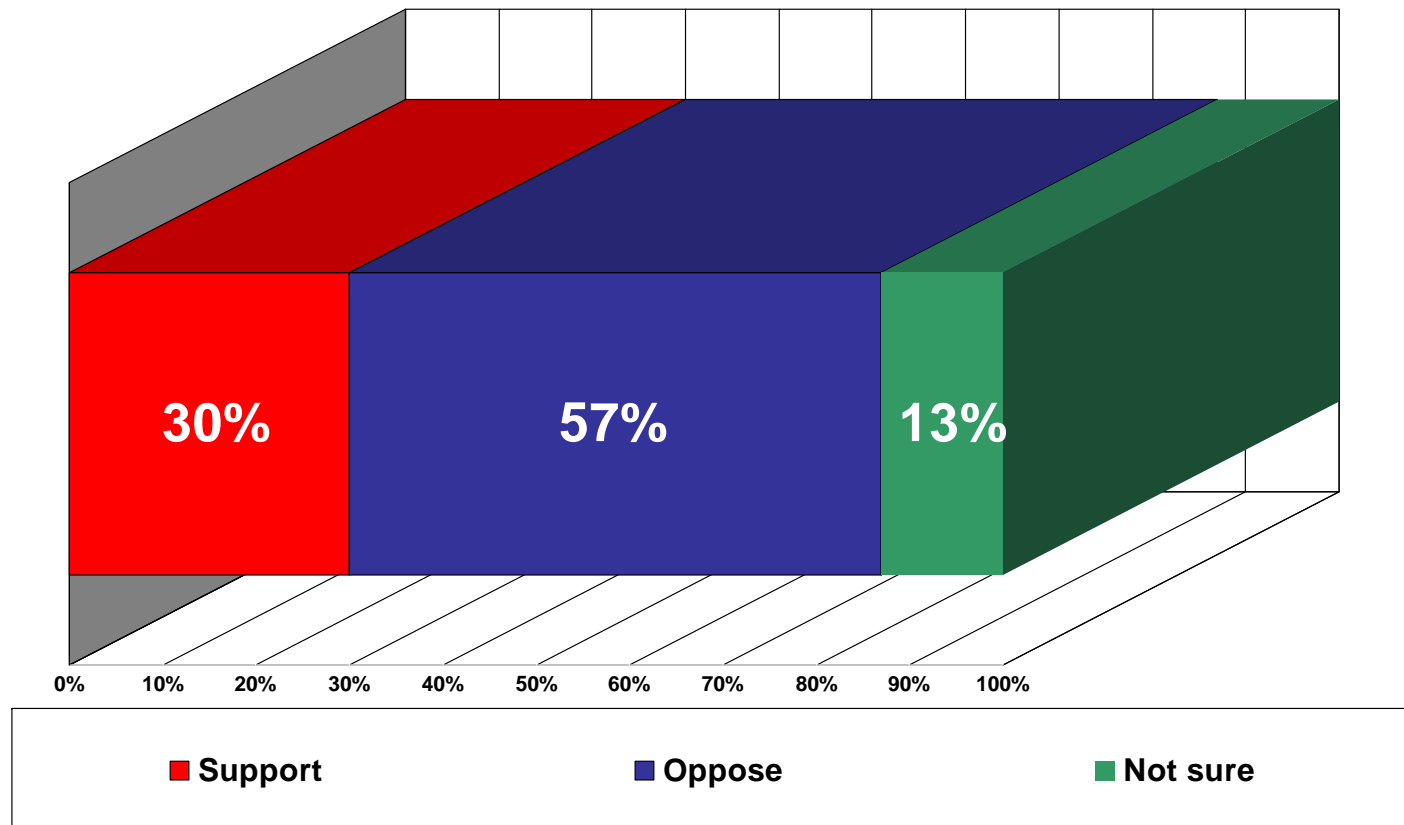
## Groups disapproving of the White House's actions:

- |                 |     |               |     |
|-----------------|-----|---------------|-----|
| • Conservatives | 97% | • Asians      | 77% |
| • Republicans   | 93% | • Gun owners  | 77% |
| • Born agains   | 91% | • NASCAR fans | 77% |
| • NRA Members   | 88% | • Protestants | 76% |
| • Catholics     | 78% | • Paid taxes  | 72% |

## Targets of opportunity:

- |                 |     |                     |     |
|-----------------|-----|---------------------|-----|
| • Independents  | 76% | • African Americans | 57% |
| • Hispanics     | 66% | • Obama Voters      | 48% |
| • Paid No Taxes | 66% | • Democrats         | 48% |
| • Age 18-29     | 59% |                     |     |

**Q. President Obama wants to impose cap-and-trade laws that would limit the total carbon dioxide emissions allowed to be released into the environment. These laws would turn carbon dioxide into a commodity allowing those that pollute less to sell credits to those that pollute more. These credits would be traded on commodities markets. According to congressional testimony given by the Director of the nonpartisan Congressional Budget Office, “decreasing emissions would also impose costs on the economy – much of those costs will be passed along to consumers in the form of higher prices for energy and energy intensive goods.” Some have estimated these costs to be \$800 to \$1300 more per household by 2015. Knowing this, do you support or oppose cap-and-trade laws?**



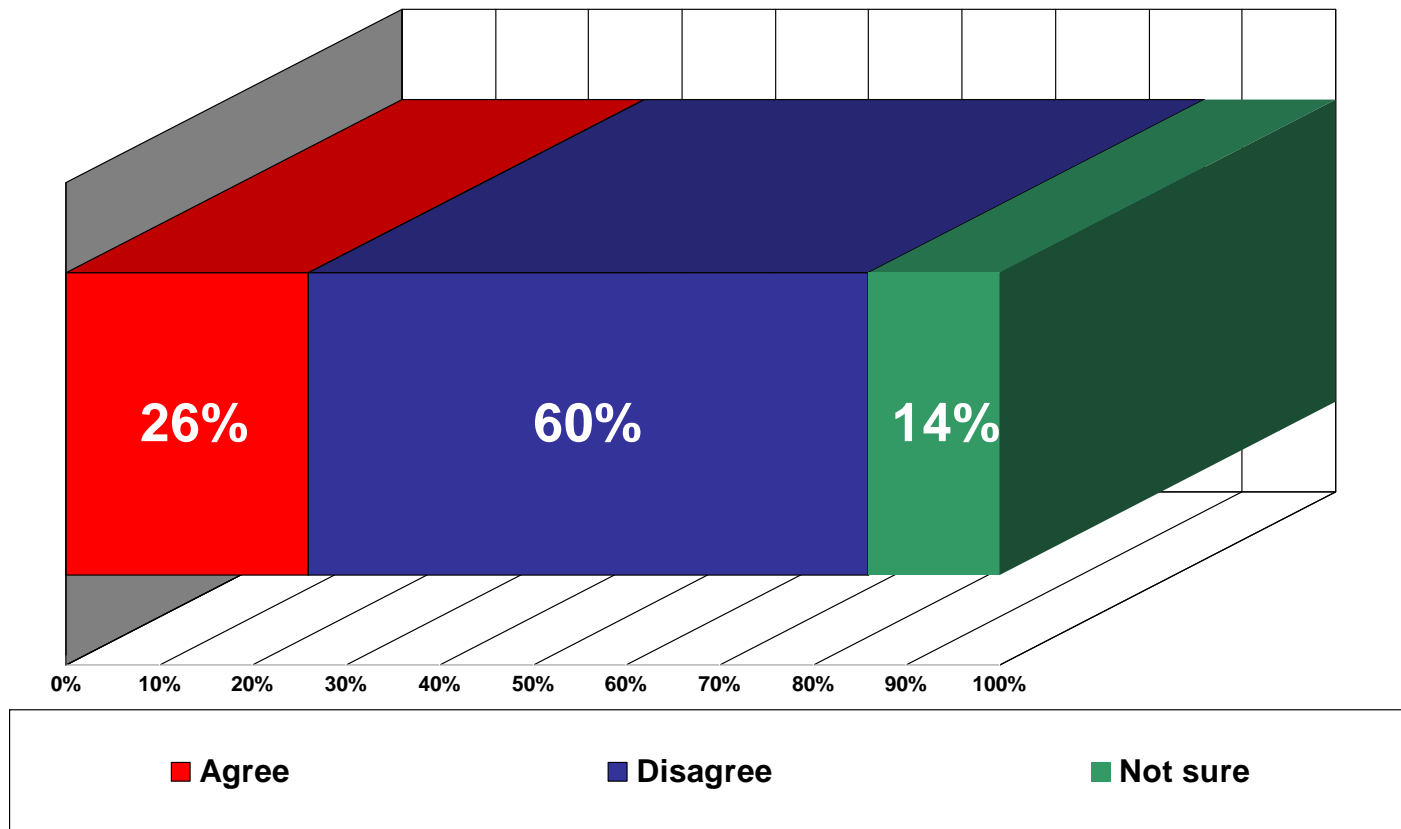
## Groups that oppose cap-and-trade laws:

• Conservatives	95%	• Gun owners	66%
• Republicans	89%	• Protestants	65%
• NRA members	76%	• Independents	63%
• Born agains	74%	• Catholics	60%
• NASCAR fans	67%		

## Targets of opportunity:

• Independents	63%	• African Americans	35%
• Hispanics	52%	• Democrats	26%
• Paid No Taxes	51%	• Obama Voters	24%
• Age 18-29	48%		

**Q. For the next Supreme Court Justice appointee, would you prefer a judge who takes the laws of other countries laws into consideration, including Islamic Sharia law and laws in socialist countries, when crafting his or her judicial opinions -- a practice frowned upon by Supreme Court Justice Sam Alito and Chief Justice John Roberts but supported by Justices Ruth Bader Ginsberg, Anthony Kennedy and Stephen Breyer?**



## Groups that disagree with judges who use laws of other countries when considering a case:

- |               |     |                        |     |
|---------------|-----|------------------------|-----|
| • Republicans | 91% | • NASCAR fans          | 67% |
| • Born agains | 77% | • Protestants          | 66% |
| • NRA members | 77% | • Armed forces members | 64% |
| • Gun owners  | 73% | • Catholics            | 64% |

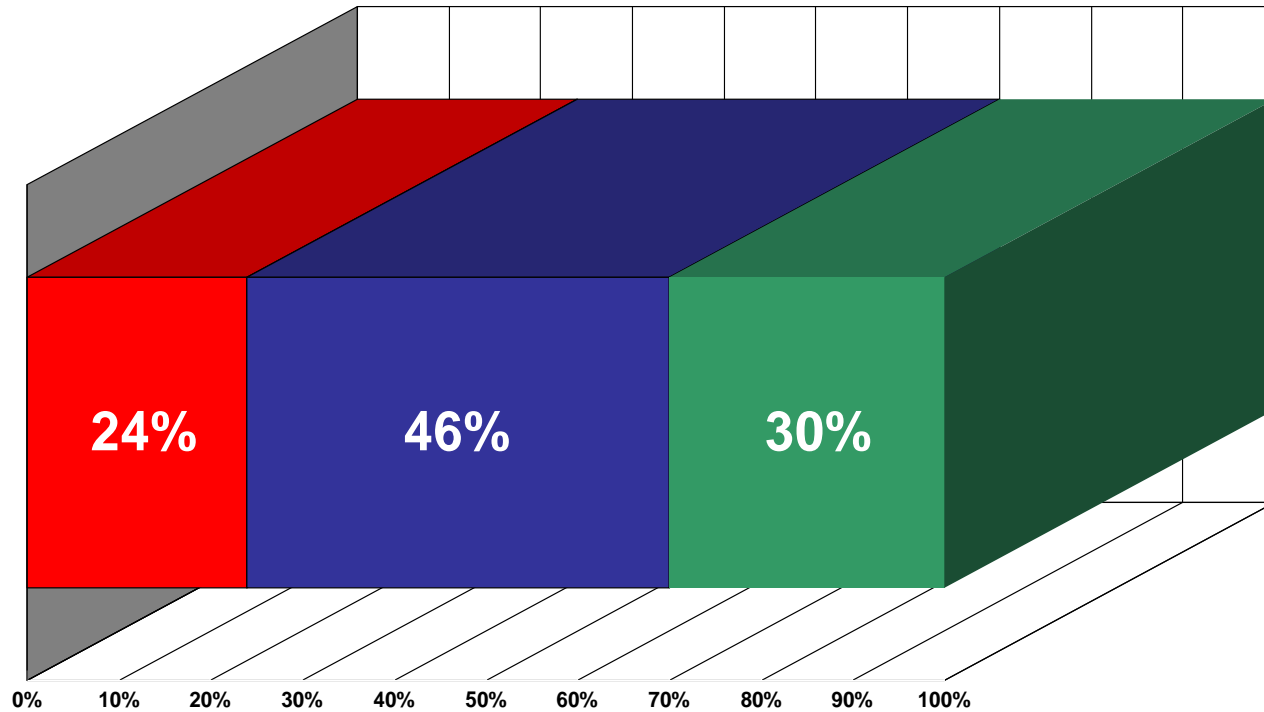
## Targets of opportunity:

- |                 |     |                     |     |
|-----------------|-----|---------------------|-----|
| • Independents  | 69% | • African Americans | 38% |
| • Hispanics     | 58% | • Obama Voters      | 31% |
| • Paid No Taxes | 52% | • Democrats         | 29% |
| • Age 18-29     | 49% |                     |     |

**Q. Do you agree or disagree with the British government's decision to ban U.S. talk radio host Michael Savage from entering their country or not?**



2008 General Election Voters



■ Agree

■ Disagree

■ Not Sure

## Groups who disagree with Britain's ban of U.S. talk radio show host, Michael Savage:

- |                 |     |                         |     |
|-----------------|-----|-------------------------|-----|
| • NRA members   | 89% | • Catholics             | 52% |
| • Conservatives | 81% | • Small business owners | 52% |
| • Republicans   | 76% | • Armed forces member   | 50% |
| • Born agains   | 63% |                         |     |

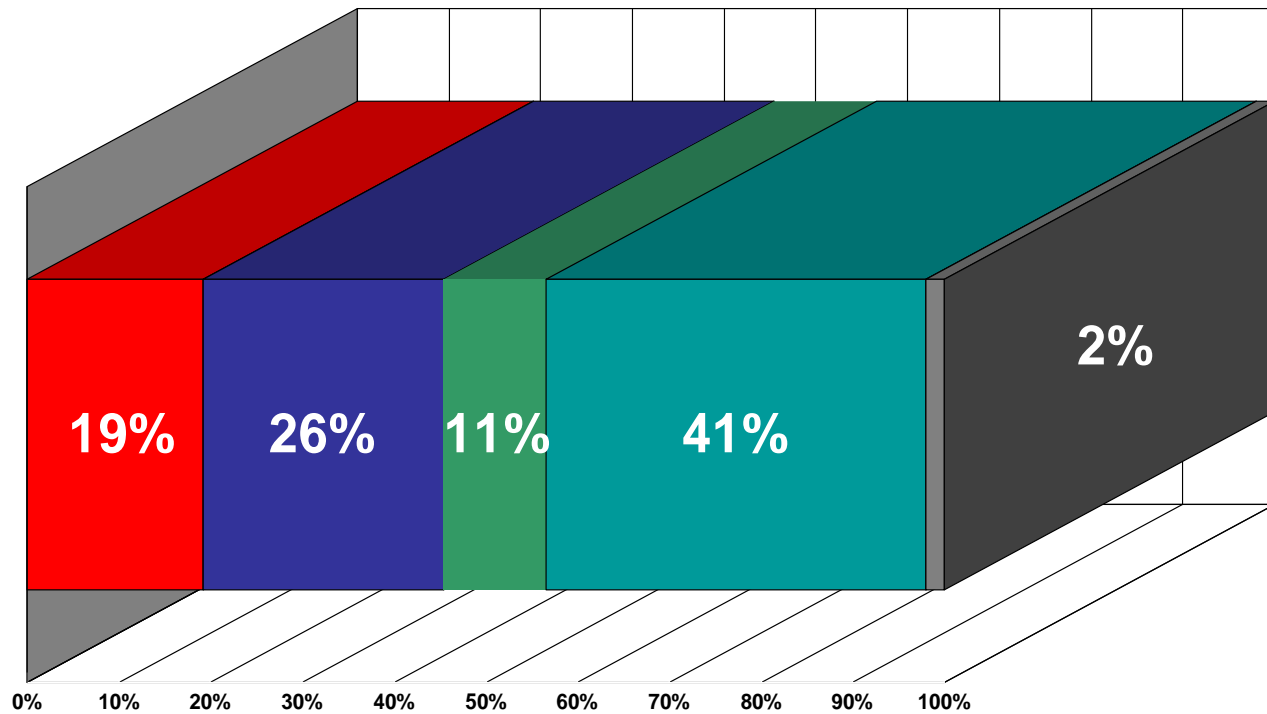
## Targets of opportunity:

- |                 |     |                     |     |
|-----------------|-----|---------------------|-----|
| • Hispanics     | 50% | • Democrats         | 21% |
| • Independents  | 49% | • African Americans | 20% |
| • Paid No Taxes | 38% | • Obama Voters      | 19% |
| • Age 18-29     | 37% |                     |     |

# Q. How do you rate President Obama's efforts to free up the credit markets in his first 60 days?



2008 General Election Voters



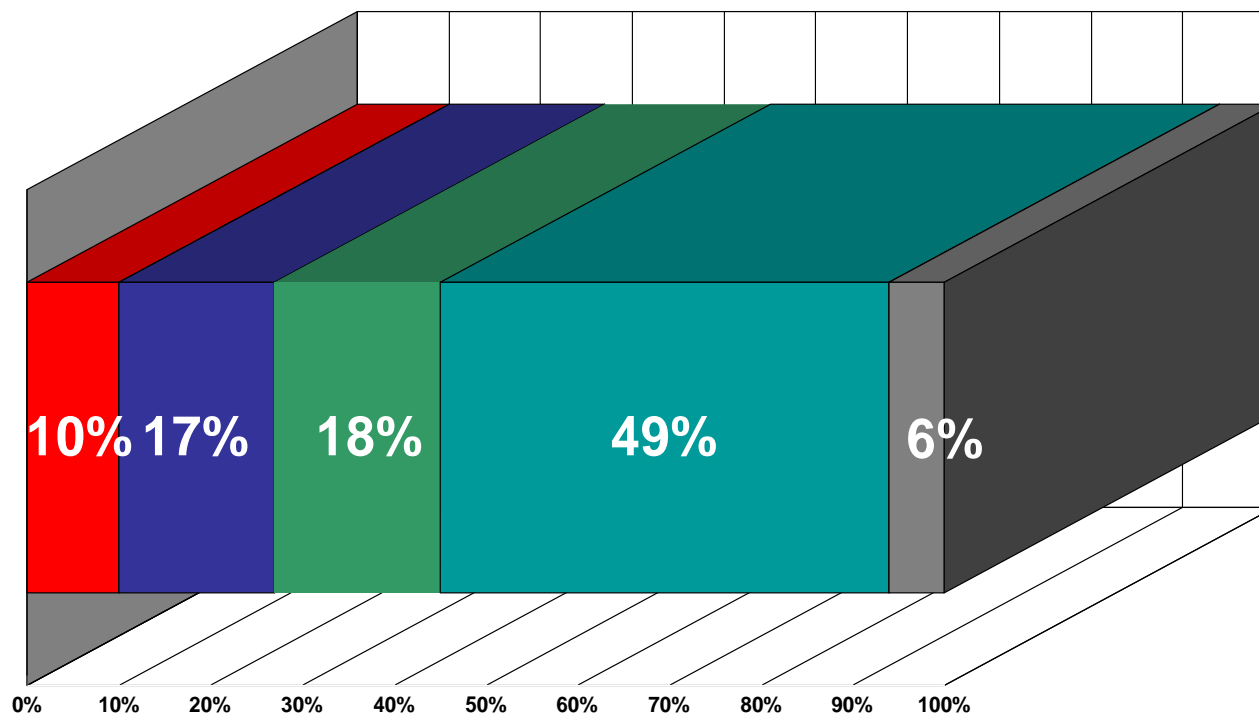
## Groups that think President Obama did a fair or poor job of freeing up the credit markets in his first 60 days:

• Conservatives	93%	• Born agains	67%
• NRA members	92%	• Small business owners	62%
• Republicans	89%	• Armed forces members	61%
• Asians	74%	• Protestants	58%
• NASCAR fans	71%	• Catholics	55%

## Targets of opportunity:

• Independents	59%	• Obama Voters	18%
• Age 18-29	52%	• Democrats	18%
• Hispanics	42%	• African Americans	12%
• Paid No Taxes	42%		

**Q. Welfare reform during the Clinton administration required people receiving government assistance to work at a job in order to receive a welfare check. The Obama administration and Congress reversed the welfare work requirement in the recent stimulus bill. Do you strongly agree, somewhat agree, somewhat disagree, or strongly disagree with the change?**



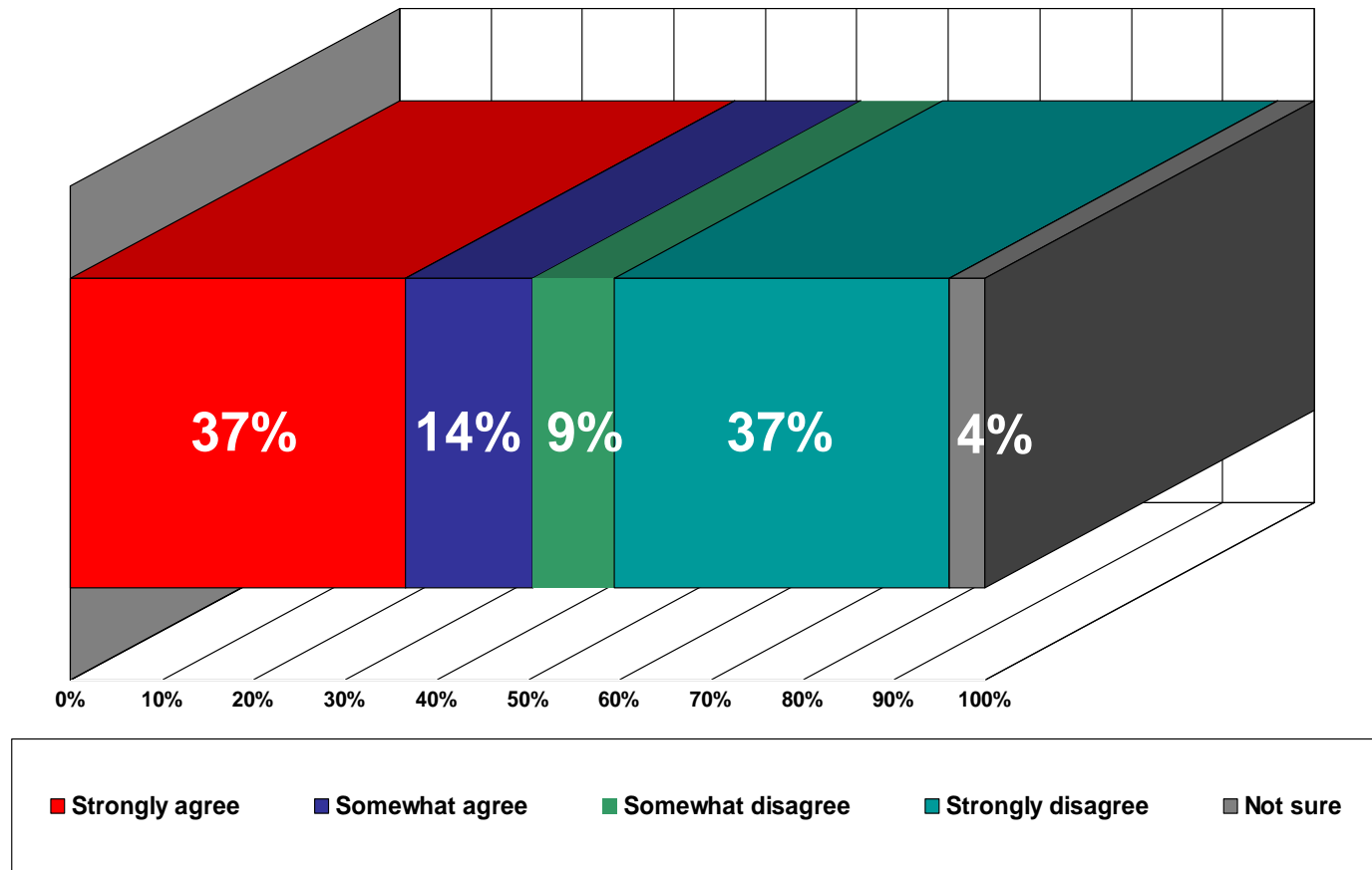
## Groups that disagree with President Obama's reversal of workfare requirements:

- |                 |     |                         |     |
|-----------------|-----|-------------------------|-----|
| • Republicans   | 94% | • Armed forces members  | 73% |
| • Conservatives | 94% | • Independents          | 72% |
| • NRA members   | 92% | • Paid taxes            | 72% |
| • NASCAR fans   | 81% | • Catholics             | 71% |
| • Born agains   | 80% | • Small business owners | 70% |
| • Protestants   | 73% |                         |     |

## Targets of opportunity:

- |                 |     |                     |     |
|-----------------|-----|---------------------|-----|
| • Independents  | 72% | • African Americans | 45% |
| • Age 18-29     | 61% | • Obama Voters      | 44% |
| • Paid No Taxes | 58% | • Democrats         | 43% |
| • Hispanics     | 56% |                     |     |

**Q. Anti-abortion groups are concerned that Congress and President Obama will soon pass and sign into law the Freedom of Choice Act, which would undo all the pro-life restrictions passed into law by the states. Do you strongly agree, somewhat agree, somewhat disagree or strong disagree with the Freedom of Choice Act?**



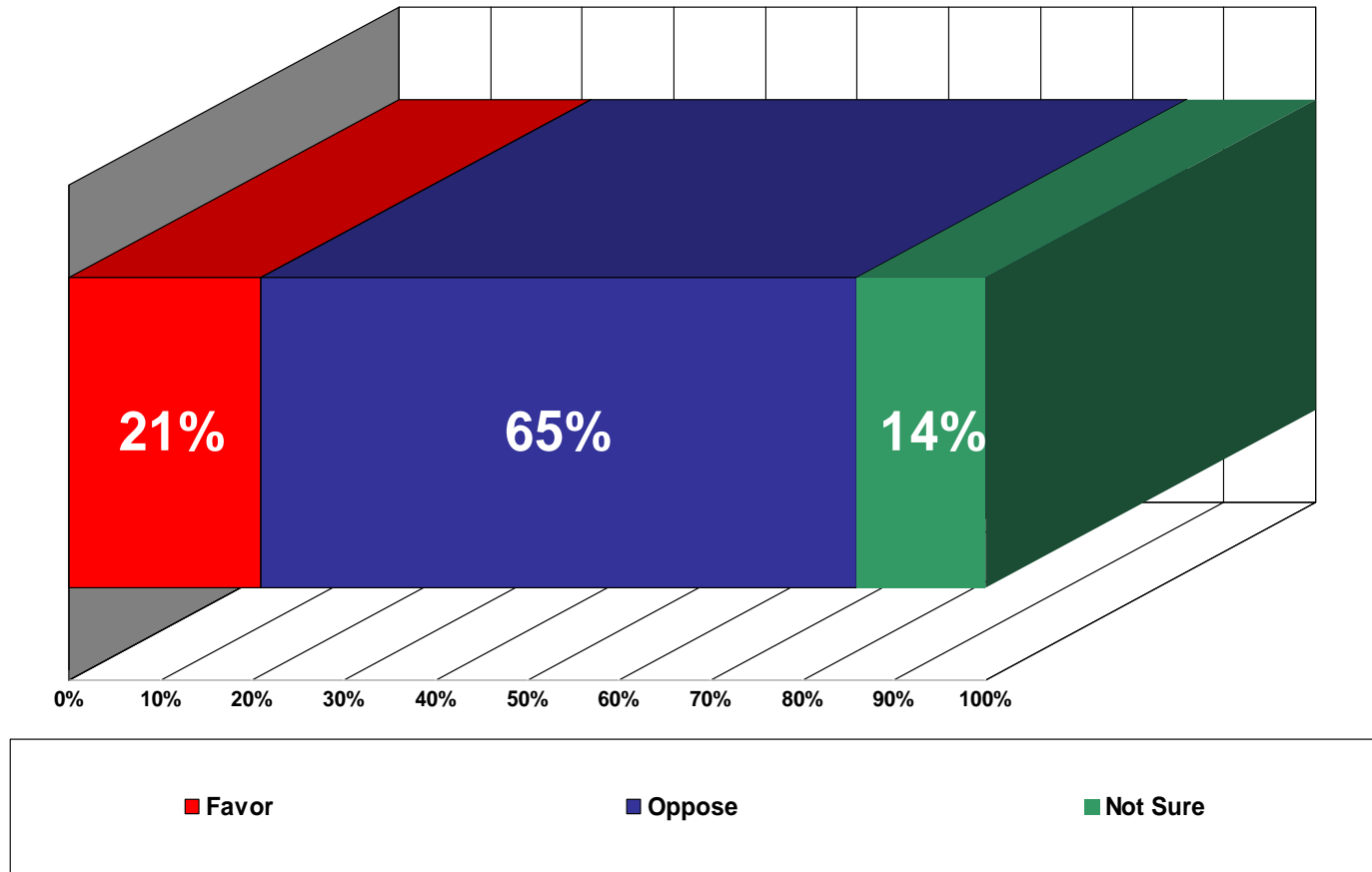
## Groups that disagree with the Freedom of Choice Act:

- |                 |     |                         |     |
|-----------------|-----|-------------------------|-----|
| • NRA members   | 89% | • NASCAR fans           | 61% |
| • Conservatives | 87% | • Armed forces members  | 56% |
| • Republicans   | 82% | • Asians                | 53% |
| • Born agains   | 71% | • Small business owners | 53% |
| • Catholics     | 63% | • Protestants           | 51% |

## Targets of opportunity:

- |                 |     |                     |     |
|-----------------|-----|---------------------|-----|
| • Independents  | 48% | • African Americans | 16% |
| • Hispanics     | 40% | • Democrats         | 14% |
| • Paid No Taxes | 38% | • Obama Voters      | 14% |
| • Age 18-29     | 43% |                     |     |

**Q. The Employee Free Choice Act is a proposed bill that would effectively eliminate the secret ballot used by workers in deciding whether or not their plant, business or small business should be unionized. Do you favor or oppose the bill?**



## Groups opposing the Employee Free Choice bill:

- |                 |     |                         |     |
|-----------------|-----|-------------------------|-----|
| • Conservatives | 92% | • Armed forces members  | 73% |
| • NRA members   | 90% | • Protestants           | 71% |
| • Republicans   | 89% | • Small business owners | 71% |
| • NASCAR fans   | 77% | • Paid taxes            | 67% |
| • Asians        | 75% |                         |     |

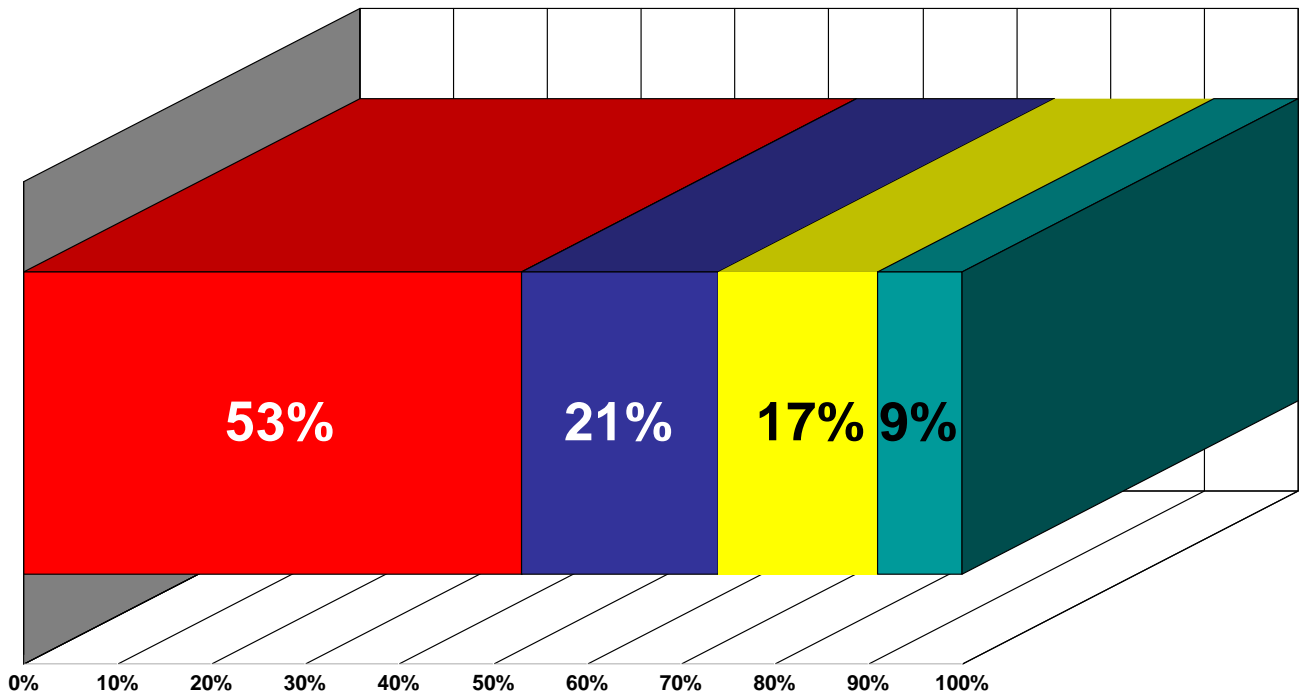
## Targets of opportunity:

- |                 |     |                     |     |
|-----------------|-----|---------------------|-----|
| • Independents  | 70% | • Democrats         | 42% |
| • Hispanics     | 66% | • Obama Voters      | 42% |
| • Age 18-29     | 66% | • African Americans | 38% |
| • Paid No Taxes | 59% |                     |     |

**Q. Opponents of producing ethanol claim the use of ethanol takes crops out of production that would otherwise be used for food, thereby raising food prices. Supporters of ethanol production claim ethanol can help reduce automobile emissions and provide cleaner air. Which side are you more likely to support?**



**2008 General  
Election Voters**



**■ Ethanol raises food prices   ■ Ethanol helps reduce emissions   ■ Neither   ■ Not Sure**

## Groups opposed to ethanol production:

- |                        |     |                         |     |
|------------------------|-----|-------------------------|-----|
| • NRA members          | 75% | • Paid taxes            | 57% |
| • Conservatives        | 74% | • Small business owners | 57% |
| • Republicans          | 71% | • Catholics             | 56% |
| • Armed forces members | 61% | • Protestants           | 53% |
| • Born agains          | 57% |                         |     |

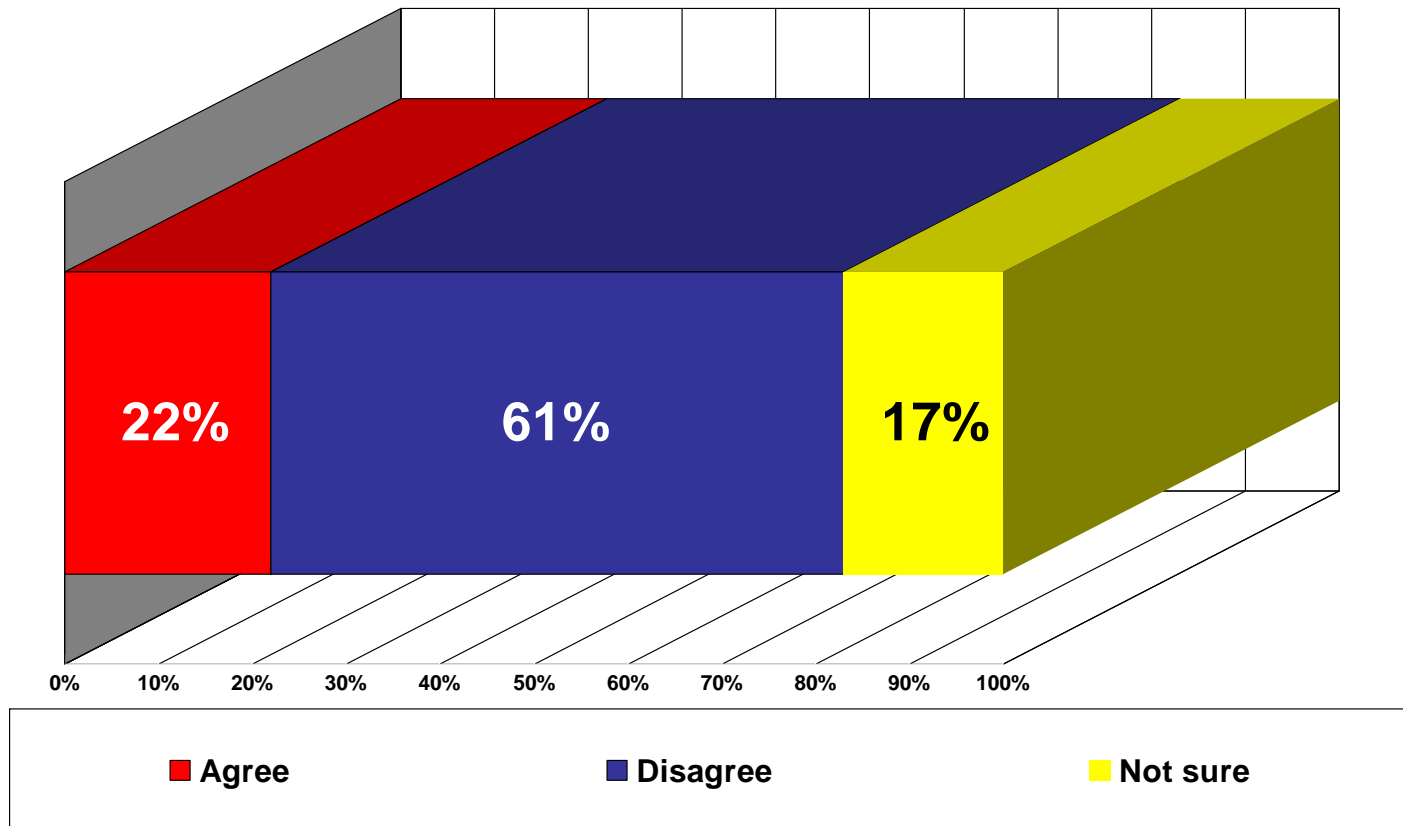
## Targets of opportunity:

- |                 |     |                     |     |
|-----------------|-----|---------------------|-----|
| • Independents  | 59% | • Obama Voters      | 38% |
| • Hispanics     | 51% | • African Americans | 36% |
| • Age 18-29     | 51% | • Democrats         | 35% |
| • Paid No Taxes | 45% |                     |     |

**Q. The recent Stimulus bill that was signed into law contained federal mandates that are not fully funded and that states may ultimately have to cover on their own through increased taxes or state spending cuts. Do you agree or disagree with the bill's unfunded federal mandates?**



**2008 General  
Election Voters**



## Groups opposed to unfunded mandates is stimulus bill:

- |                 |     |                         |     |
|-----------------|-----|-------------------------|-----|
| • NRA members   | 90% | • Catholics             | 65% |
| • Conservatives | 89% | • Protestants           | 65% |
| • Republicans   | 87% | • Small business owners | 65% |
| • Born agains   | 73% | • Armed forces members  | 64% |
| • NASCAR fans   | 69% | • Paid taxes            | 63% |

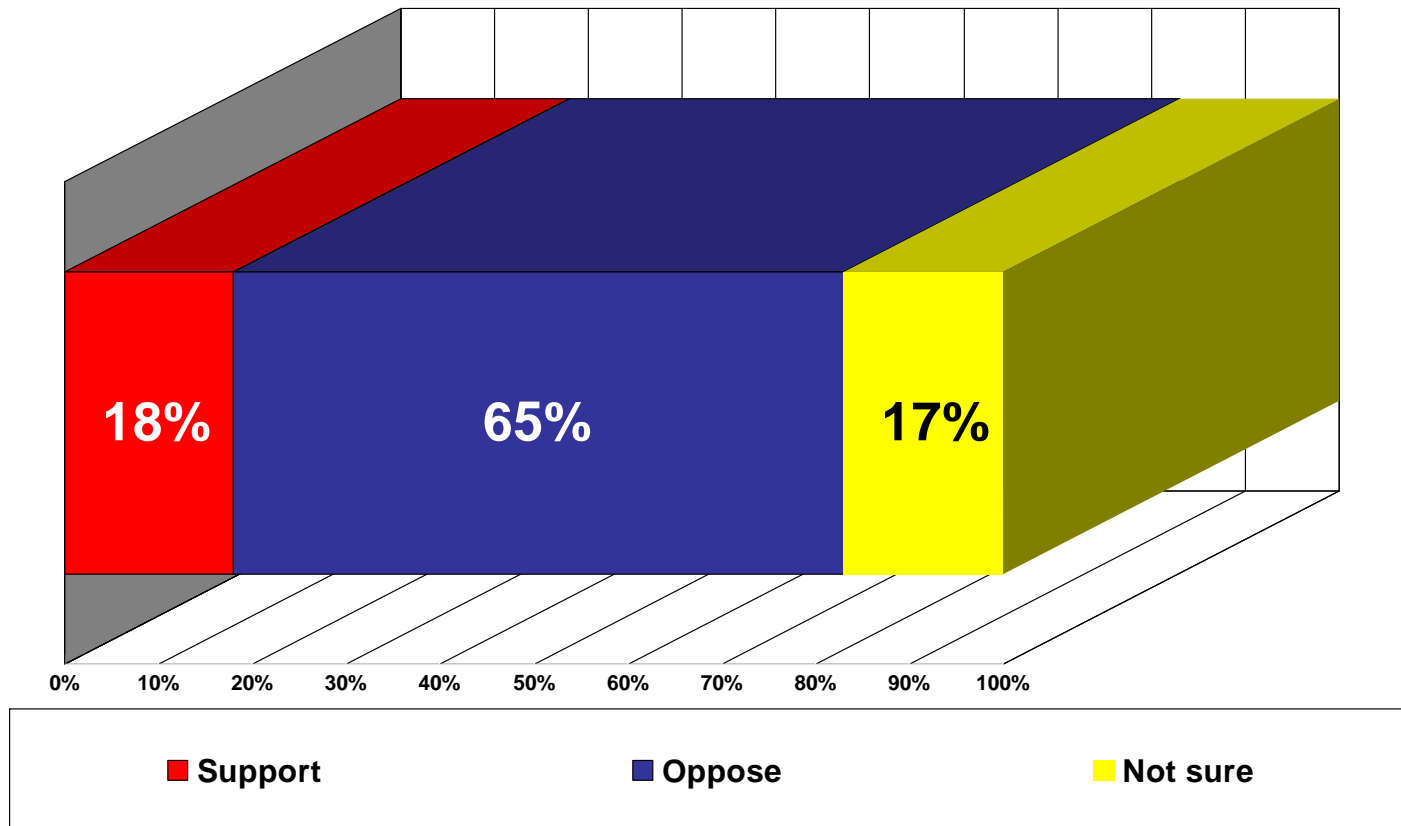
## Targets of opportunity:

- |                 |     |                     |     |
|-----------------|-----|---------------------|-----|
| • Hispanics     | 68% | • African Americans | 41% |
| • Independents  | 62% | • Democrats         | 38% |
| • Paid No Taxes | 52% | • Obama Voters      | 36% |
| • Age 18-29     | 54% |                     |     |

**Q. Several Democratic members of Congress have asked Treasury Secretary Timothy Geithner to open up access to credit for minority-owned radio stations like the Treasury Department has done for the GM and Chrysler. Do you support or oppose a bailout of minority broadcasters?**



**2008 General  
Election Voters**



## Groups opposed to a government bailout of minority-owned radio stations:

• Small business owners	72%	• Conservatives	92%
• Protestants	69%	• Republicans	91%
• Paid taxes	69%	• Asians	77%
• Armed forces members	68%	• Born agains	75%
• NASCAR fans	67%	• Catholics	72%
• NRA members	93%		

## Targets of opportunity:

• Independents	71%
• Age 18-29	66%
• Hispanics	58%
• Paid No Taxes	56%
• Obama Voters	42%
• Democrats	41%
• African Americans	30%